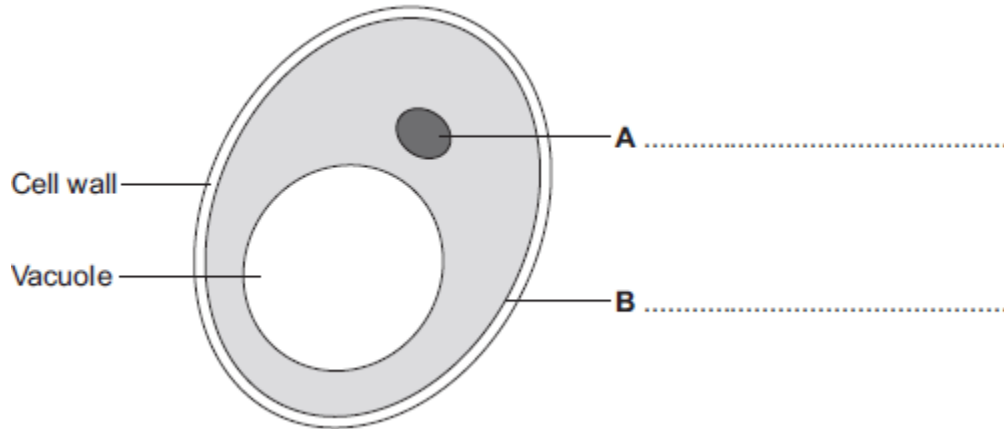


1

Human cells and yeast cells have some parts that are the same.

(a) The diagram shows a yeast cell.



Parts **A** and **B** are found in human cells and in yeast cells. On the diagram, label parts **A** and **B**.

(2)

(b) Many types of cell can divide to form new cells.

Some cells in human skin can divide to make new skin cells.

Why do human skin cells need to divide?

.....
.....

(1)

(c) Human stem cells can develop into many different types of human cell.

(i) Use the correct answer from the box to complete the sentence.

embryos	hair	nerve cells
----------------	-------------	--------------------

Human stem cells may come from

.....

(1)

(ii) Use the correct answer from the box to complete the sentence.

cystic fibrosis	paralysis	polydactyly
------------------------	------------------	--------------------

Human stem cells can be used to treat

.....

(1)
(Total 5 marks)

Mark schemes

1

(a) **A** = nucleus

allow phonetic spelling

1

B = (cell) membrane

1

(b) for repair / growth **or** to replace cells

ignore new cells / skin

1

(c) (i) embryos

1

(ii) paralysis

1

[5]