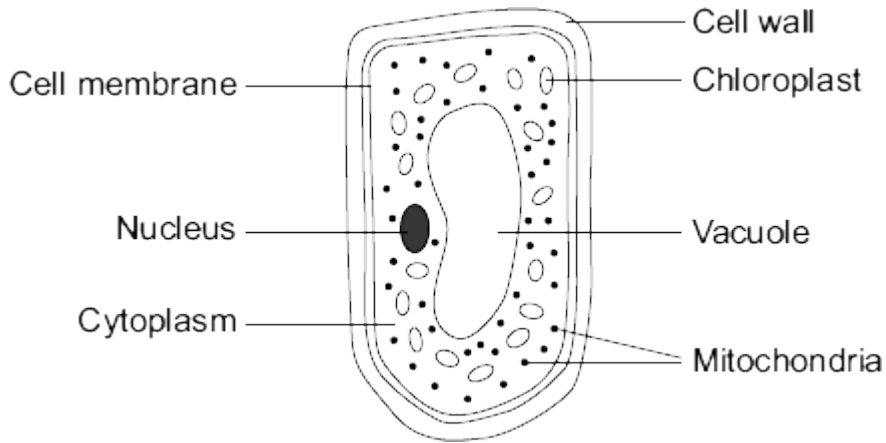


1

The diagram shows a cell from a plant leaf.



(a) Name the part of this cell that:

(i) controls the passage of substances in and out of the cell

.....

(1)

(ii) is filled with cell sap.

.....

(1)

(b) Give the names of **two** parts of the leaf cell that would **not** be found in a human liver cell.

..... and

(2)

(c) The chloroplasts produce oxygen.

Draw a ring around the correct answer to complete the sentence.

The oxygen produced by the chloroplasts passes out of the cell by

- diffusion.
- digestion.
- respiration.

(1)

(Total 5 marks)

Mark schemes

1	(a) (i) (cell) membrane	1
	(ii) vacuole	1
	(b) any two from:	
	• (cell) wall	
	• chloroplast(s) <i>ignore chlorophyll</i>	
• vacuole <i>ignore cell sap</i>	2	
(c) diffusion	1	
		[5]