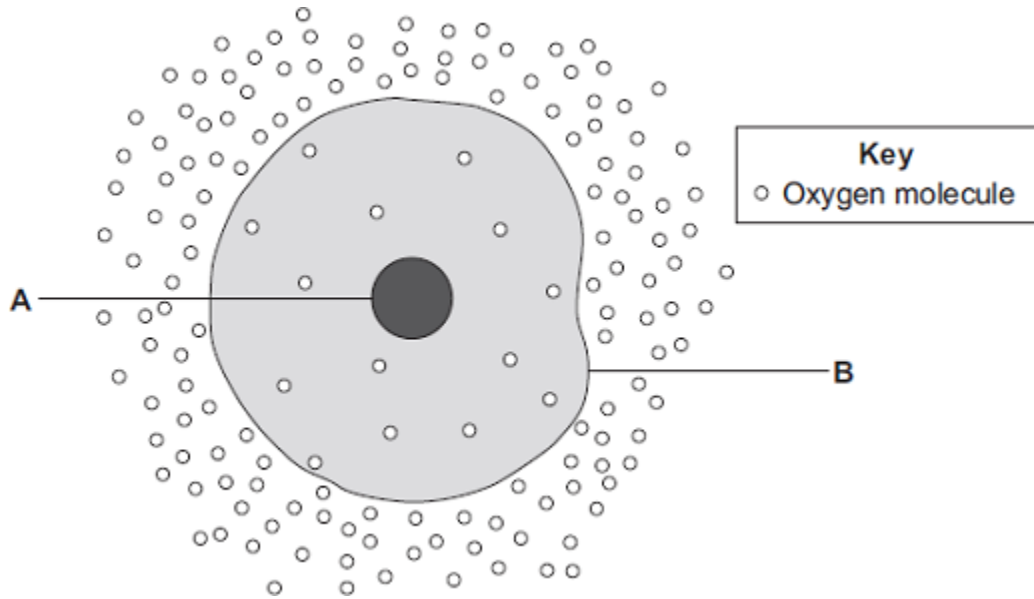


1

The diagram shows a cell.



(a) (i) Use words from the box to name the structures labelled **A** and **B**.

cell membrane	chloroplast	cytoplasm	nucleus
---------------	-------------	-----------	---------

A

B

(2)

(ii) The cell in the diagram is an animal cell.
How can you tell it is an animal cell and **not** a plant cell?

Give **two** reasons.

1

.....

2

.....

(2)

(b) Oxygen will diffuse into the cell in the diagram.

Why?

Use information from the diagram.

.....
.....

(1)

(c) The cell shown in the diagram is usually found with similar cells.

Draw a ring around the correct answer to complete the sentence.

Scientists call a group of similar cells

- an organ.
- a system.
- a tissue.

(1)

(Total 6 marks)

Mark schemes

- 1** (a) (i) A = nucleus 1
- B = (cell) membrane 1
- (ii) any **two** from:
ignore shape
- no (cell) wall
 - no (large / permanent) vacuole
 - no chloroplasts / chlorophyll 2
- (b) because high to low oxygen / concentration **or** down gradient
allow 'more / a lot of oxygen molecules outside'
ignore along / across gradient 1
- (c) a tissue 1
- [6]**