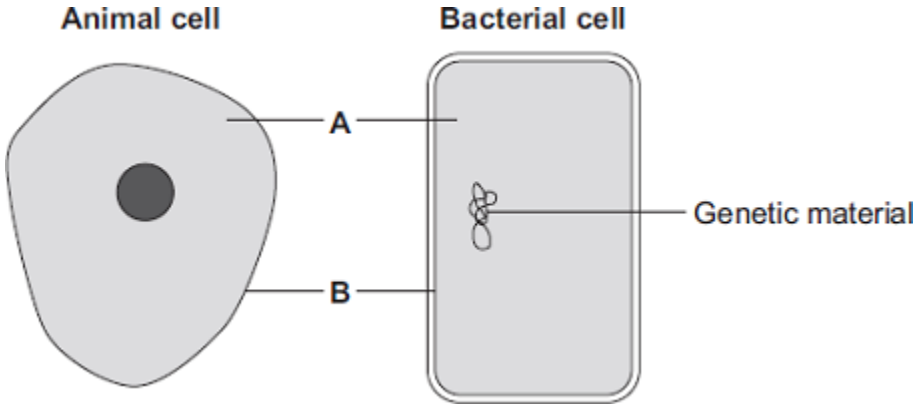


1

The diagrams show an animal cell and a bacterial cell.



(a) (i) Structures **A** and **B** are found in both the animal cell and the bacterial cell.

Use words from the box to name structures **A** and **B**.

cell membrane	chloroplast	cytoplasm	vacuole
---------------	-------------	-----------	---------

**A** .....

**B** .....

(2)

(ii) Both cells contain genetic material.

Name the structure in the animal cell that contains genetic material.

.....

(1)

(b) **List A** gives three structures found in animal cells.

**List B** gives four functions of cell structures.

Draw **one** line from each structure in **List A** to its correct function in **List B**.

**List A – Structure**

Cell membrane

Mitochondrion

Ribosome

**List B – Function**

Controls what substances enter the cell

Photosynthesis

Protein synthesis

Respiration

(3)  
(Total 6 marks)

## Mark schemes

1

(a) (i) A = cytoplasm

1

B = (cell) membrane

1

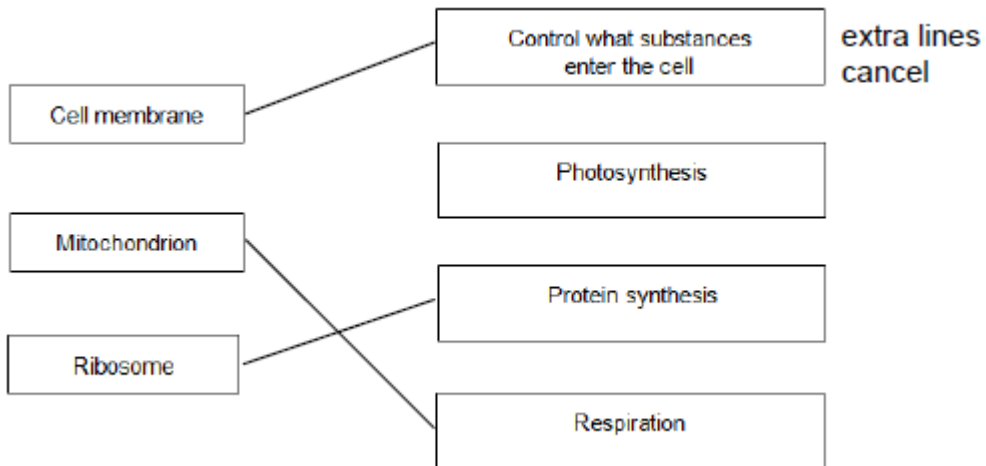
(ii) nucleus

*accept chromosome / DNA / genes*

*accept phonetic*

1

(b)



3

[6]