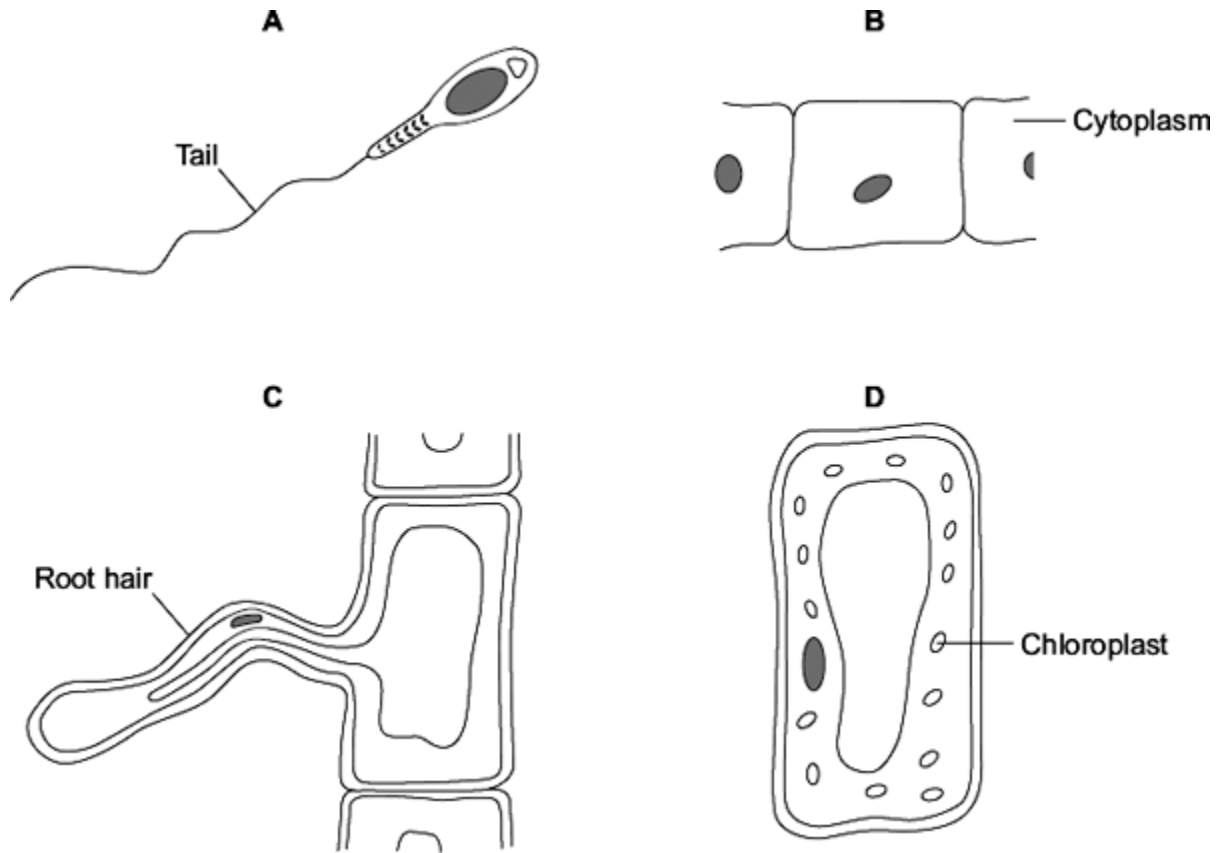


1

The diagrams show four types of cell, **A**, **B**, **C** and **D**.
Two of the cells are plant cells and two are animal cells.



(a) (i) Which **two** of the cells are plant cells?

Tick (✓) **one** box.

A and B

A and D

C and D

(1)

(ii) Which part is found **only** in plant cells?

Draw a ring around **one** answer.

cell membrane

cell wall

nucleus

(1)

(b) (i) Which cell, **A**, **B**, **C** or **D**, is adapted for swimming?

(1)

(ii) Which cell, **A**, **B**, **C** or **D**, can produce glucose by photosynthesis?

(1)

(c) Cells **A**, **B**, **C** and **D** all use oxygen.

For what process do cells use oxygen?

Draw a ring around **one** answer.

osmosis

photosynthesis

respiration

(1)
(Total 5 marks)

Mark schemes

1

(a) (i) C and D

1

(ii) cell wall

1

(b) (i) A

1

(ii) D

1

(c) respiration

1

[5]